

F. UCHIYAMA & CO., LTD

Noboru Uchiyama

Yokohama, Japan

E. info@f-uchiyoama.com, Ph. +81 45 663 6677



Mitsubishi

FGE35AT

2013

Yokohama, Japan

onQ-65940

FORKLIFTS - COUNTER BALANCE ICE

USED - SALE

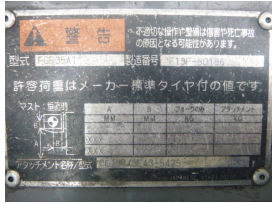
Date Listed	19 Oct 2025
Serial Number	F13F-80186
Machine Hours	13393
Power Type	Petrol / Gasoline
Lift Capacity	3,500 kg(7,716 lb)
Mast Type	Triplex (3 Stage)
Maximum Lift Height	5,000 mm(197 in)
Tyre Type	Solid / Puncture Proof
Machine Condition	Condition GOOD ***

Machine Features Attachment included

ADDITIONAL INFORMATION

Paper Roll Clamp





BETTER, SMARTER, MORE FOCUSED, EASY AS.

- Machinery-onQ is an international platform for the sale and acquisition of both new & used mobile machinery.
- The platform features forklifts, warehouse equipment, container handlers, log handlers, aerial work platforms, port cranes, tow trucks, terminal tractors, industrial sweepers and forklift attachments.

This platform is produced by FORKLIFTACTION



Machinery-onQ is a Business Platform by ForkliftAction Media.

<https://www.machinery-onq.com/machine-forklifts-counter-balance-ice-mitsubishi-fge35at-2013-used-sale-japan/65940>

© ForkliftAction Media 2025